

F

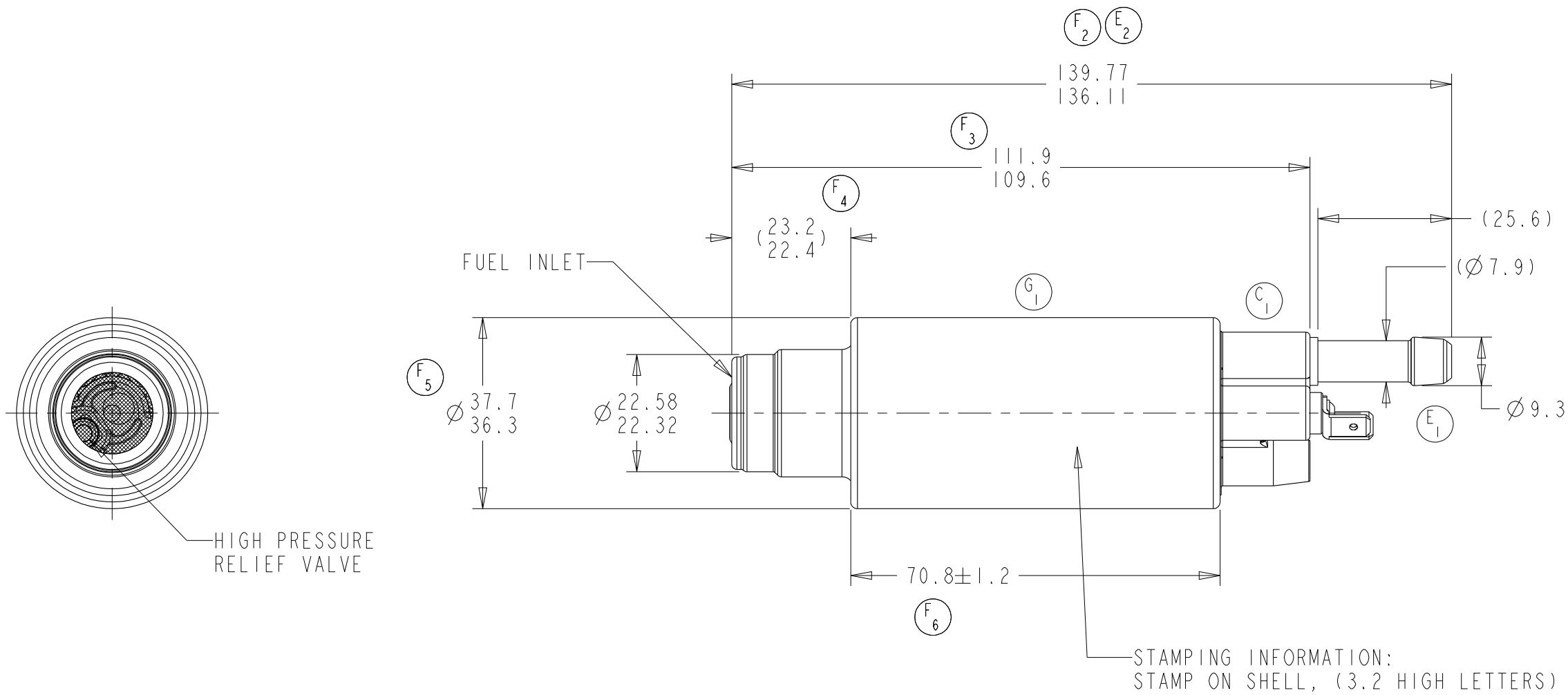
E

D

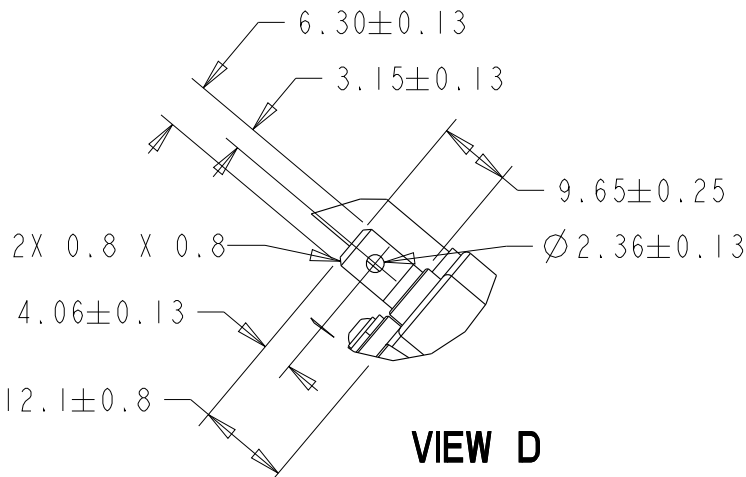
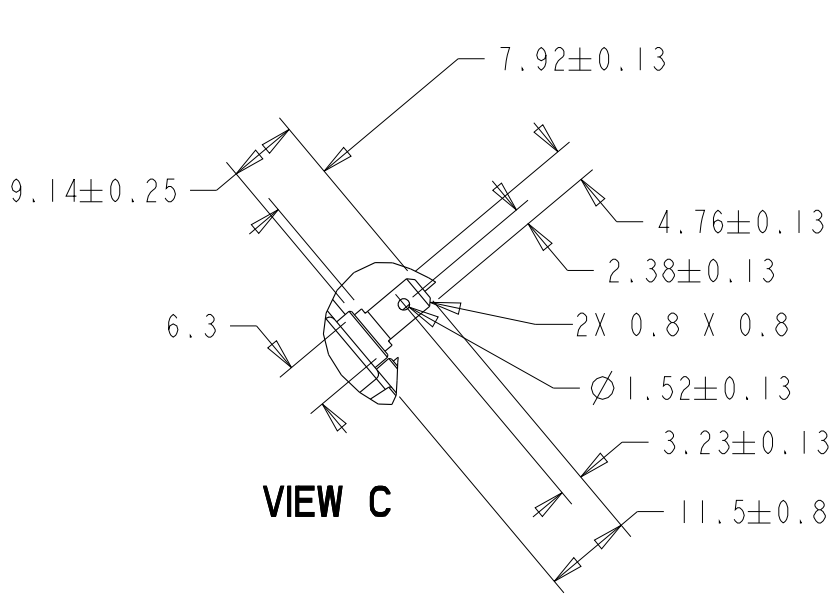
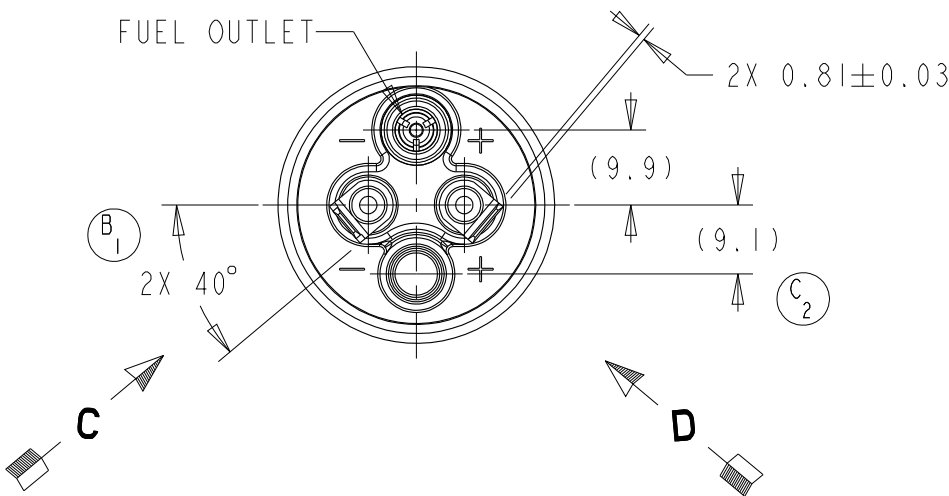
C

B

A



Stamping information: A0U203 (JULIAN DATE OF MFG) MADE IN USA. Includes TI Automotive logo and callouts A1, F1, D1.



NOTE: PUMP TO HAVE PLUG PROTECTORS FOR BOTH INLET AND OUTLET, AND BE IN A POLY-BAG

KEY PRODUCT CHARACTERISTICS				
REFER TO TI AUTOMOTIVE GLOBAL ADVANCED QUALITY PLANNING DOCUMENT CW-4-ALL-411 FOR THE CLASSIFICATION AND CONTROL OF KEY PRODUCT CHARACTERISTICS				
TYPE OF CHARACTERISTIC	SAFETY	REGULATORY	FUNCTION	FUNCTION PROCESS
	SC	SC	SC	SC
NUMBER PER EACH CHARACTERISTIC	--	--	--	--
TOTAL NUMBER OF CHARACTERISTICS	--	--	--	--
- TI AUTOMOTIVE CONFIDENTIAL AND PROPRIETARY - THIS DRAWING IS PROPERTY OF TI AUTOMOTIVE. TI AUTOMOTIVE CLAIMS PROPRIETARY RIGHTS IN THE SUBJECT MATTER SHOWN AND DESCRIBED ON THIS DRAWING AND RETAINS ALL INTELLECTUAL PROPERTY RIGHTS. THE DRAWING IS PROVIDED FOR REFERENCE PURPOSES ONLY AND ON THE EXPRESS CONDITION THAT IT WILL BE HELD IN CONFIDENCE. THIS DRAWING SHALL NOT BE DISCLOSED TO OTHERS OR USED FOR THE PURPOSE OF MANUFACTURE BY OR PROCUREMENT FROM OTHERS OF THE ARTICLE OR PART SHOWN WITHOUT TI AUTOMOTIVE'S EXPRESS WRITTEN CONSENT. NO LICENSE OR OTHER RIGHT IS GIVEN OR IMPLIED BY THE PROVISION OF THIS DRAWING TO RECIPIENT. COPYRIGHT, TI AUTOMOTIVE 2018, ALL RIGHTS RESERVED.				

REVISIONS						
ZONE	LTR	DESCRIPTION	CHANGE No	DATE	BY	APPR'D
		REL FOR PROD	63846	18APR95	RMB	RMC
5-C	A	A1 ADDED STAMPING INFO	64907	23FEB99	TMS	RMB
3-D	B	B1 40° WAS 45° 35°	68608	02APR03	RMB	TB
5-D 2-D	C	C1 CHANGED OUTLET COVER C2 ADDED DIMENSION	68710	03DEC03	RMB	BJB
4-C	D	D1 REMOVED PATENT #'S	71352	19JUN08	DRG	BLM
4-D 5-E	E	E1 REPLACED OUTLET FITTING & CHECK VALVE ASSEMBLY E2 139.23 WAS 134.4 135.44 130.6	71719	03NOV08	DRG	MMcK
5-C 5-E 5-E 6-E 7-D 6-D ---	F	F1 UPDATED STAMPING INFO F2 139.77/136.11 WAS 139.23/135.44 F3 111.9/109.6 WAS 111.7/109.3 F4 23.2/22.4 WAS 22.5/21.5 F5 37.7/36.3 WAS 37.4/36.3 F6 70.8±1.2 WAS 70.1±1.1 F7 UPDATED DRAWING FORMAT	C'5018	02MAR18	SLK	BLM
5-D	G	G1 DBTC00302 MAGNETS WERE 184-27	83671	21JUL23	JTK	MLM

METRIC
ALL DIMENSIONS ARE IN MILLIMETERS

DO NOT SCALE
DECIMAL TOLERANCES UNLESS OTHERWISE SPECIFIED
ONE PLACE ±0.25 TWO PLACE ±0.13 ANGLES ±1°

THIRD ANGLE PROJECTION
DIMENSIONS IN ACCORDANCE WITH ASME Y14.5 - 2009

630 COLUMBIA ST.
CARO, MI 48723
+1 989.673.7727

ENGINEER:

DESIGNER: DPS

CAD SYSTEM: PRO/E

REFERENCE ID/REV.: HJPX0039

REFERENCE ID/REV.: 000119905/AB

DRAWING NAME: FUEL PUMP OUTLINE

SIZE: A2

MATERIAL/SPECIFICATION: SEE NOTES

13APR1995

SCALE: 1:1

2D PLM REFERENCE/REV.: AR0005924/AG

3D PLM REFERENCE/REV.: 000007513/AD

DRAWING NUMBER: A0U203

SHEET NO. 1 OF 1